



Symphony iManage for ASD

Create and maintain BS7666 compliant Associated Street Data



Symphony iManage for ASD

The ASD Solution that's streets ahead

Associated Street Data (ASD) forms part of the National Street Gazetteer (NSG) and contains a wealth of additional information related to streets. ASD contains information such as the ownership of the streets, streets with special surfaces, height and weight restrictions, traffic sensitive streets and much more. ASD significantly increases the scope of the NSG by allowing those using it to have all the information about any particular street easily available.

Whereas the NSG contains details and information about street locations, it is the ASD that contains the information that is of most use to external organisations.

It contains information that is invaluable to highways departments, utility companies and the emergency services, and BS7666 standardisation means the data from across the UK will be compatible and simple to collate.

The use of Unique Street Reference Numbers (USRN) within the NSG, including ASD, give each street and its associated data a method through which duplication is avoided and consistency is maintained.

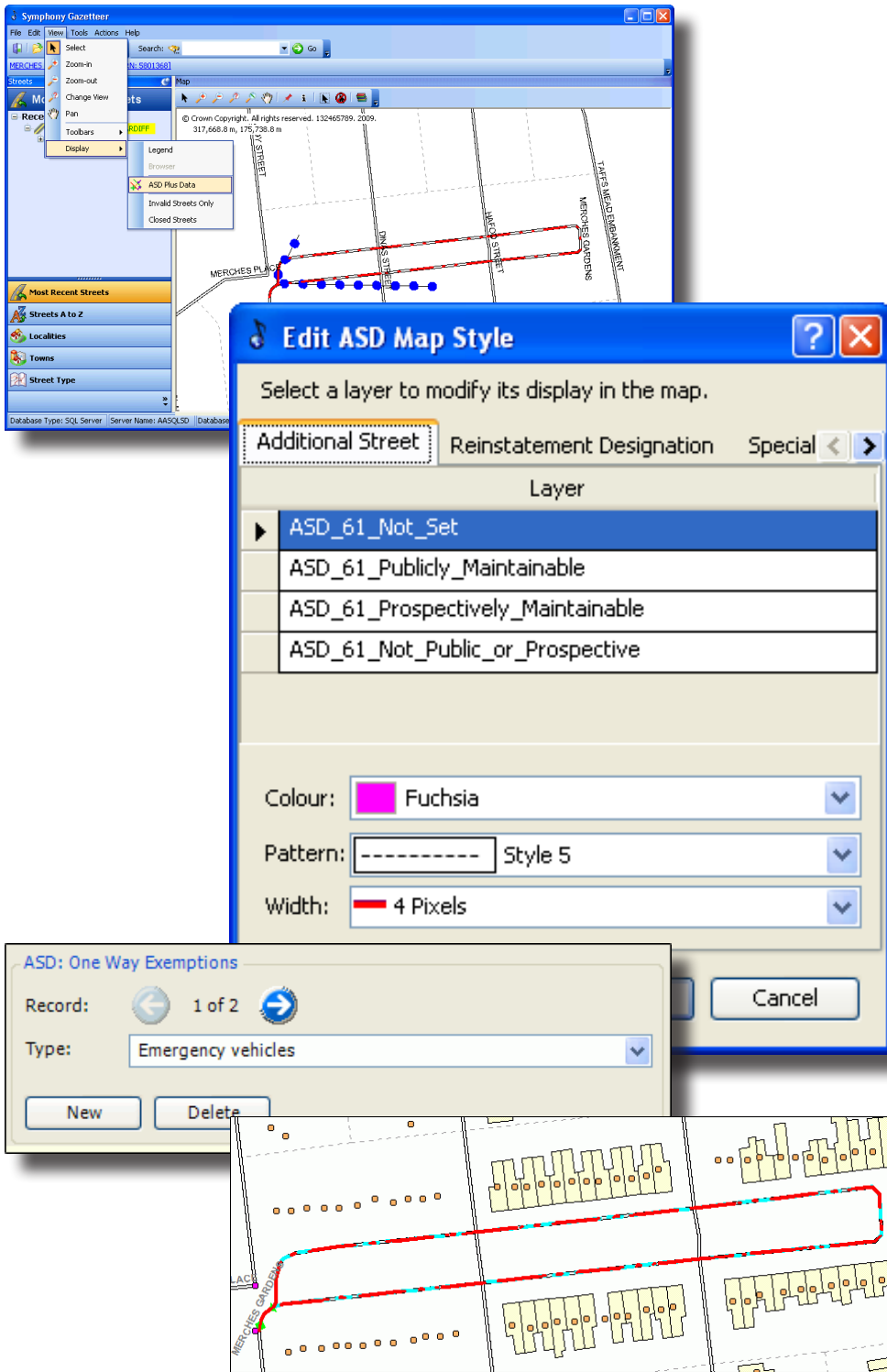
ASD data is becoming some of the most important available, underpinning much of the country's infrastructure. Essential to external organisations, its value to local authorities for planning items such as school routes is considerable.

Key Features

- Fully BS7666 compliant
- Seamless integration with your street gazetteer
- Compliant with ETon 5 and the Traffic Management Act
- Integrated GIS functionality
- Ability to control data from the map
- Ability to make submissions to the National Hub in DTF 7.1
- Support for Oracle and SQL
- Built with the latest .NET technology
- A solution trusted by over 20% of local highway agencies
- Full support from a dedicated team of developers

"Aligned Assets created a good looking, easy to use, innovative solution to a complex set of requirements. The project ran on time and within budget, and we would be delighted to work with them again."

- Jane Silvester, Rochdale Metropolitan Borough Council



Traffic Management Act EToN

A significant part of the ASD is designed to allow Local Highway Agencies to comply with the Electronic Transfer of Notices (EToN) and the Traffic Management Act. This enables the handling of electronic posting and routing of StreetWorks Notices and Inspection Results.

Our ASD module is fully compliant with the latest EToN 5 technical specifications and we have a team of developers who work to ensure that regardless of any changes in the regulations, our ASD module will always stay ahead of these developments.

With the threat of fines resulting from Highway Agencies not submitting compliant data, and rules for compliancy ever-changing, it has never been more important to have a software supplier that can balance the needs of the user against the legal requirements.

ASD Plus

To further enhance the use of ASD data, we have released ASD Plus, which is an extra feature within our standard ASD module.

It contains additional display features making the visualisation of your ASD data much simpler and user-friendly, whilst the addition of Type 64 and Type 65 records gives your ASD significantly more value.

ASD Plus not only makes working with your data an easier experience, but offers your partners in highways, the utilities and the emergency services a wealth of additional, useful information.

What's included in ASD Plus

- Improved map display of ASD records for type 61 (interest), 62 (reinstatement designation) and 63 (special designation) records.
- Display of Partial ASD records as Polylines and not Points.
- The ability to update the new ESU information (ESU Direction) within iManage by adding a new ESU tab to the street dialog.
- The ability to import type 64 records (Height Width and Weight).
- The ability to create, read, update and delete type 64 records by adding a new tab to the ASD tab in the street dialog.
- The ability to export type 64 records.
- The ability to import type 65 records (One Way Street Exemption).
- The ability to create, read, update and delete type 65 records by adding information to the new ESU tab in the street dialog.
- The ability to export type 65 records.
- Added display of the type 64 records to the map.
- Added display of the type 65 records to the map.
- Modified display of ESUs to include the information in the new ESU Direction field.

Aligned Assets Limited
Unit 5, River Court
Albert Drive, Sheerwater
Woking, Surrey GU21 5RP
United Kingdom



Tel: +44 (0) 870 750 8 750
Fax: +44 (0) 870 750 9 750
Email: sales@aligned-assets.co.uk
Web: www.aligned-assets.co.uk