

# SAMS CCTV

CCTV Location and Asset Management



## SAMS CCTV

Management of both public and private CCTV assets

SAMS CCTV is the UK's first and only commercially available location and asset management system for CCTV. It allows you to record all information relating to CCTV cameras and manage that information through the user-friendly interface.

The CCTV information you record can be accessed by members of your organisation through a web browser so that within seconds they can know if a camera exists at a specific location and all related information about that camera.

### What SAMS CCTV Contains

#### Location Management

SAMS CCTV allows you to search for any address and locate the address on a map and immediately identify related CCTV assets either tied directly to the address or geographically related addresses.

#### Asset Management

Each CCTV asset contained in SAMS CCTV can have recorded against it CCTV specific information such as retention period, playback, recording and export information.

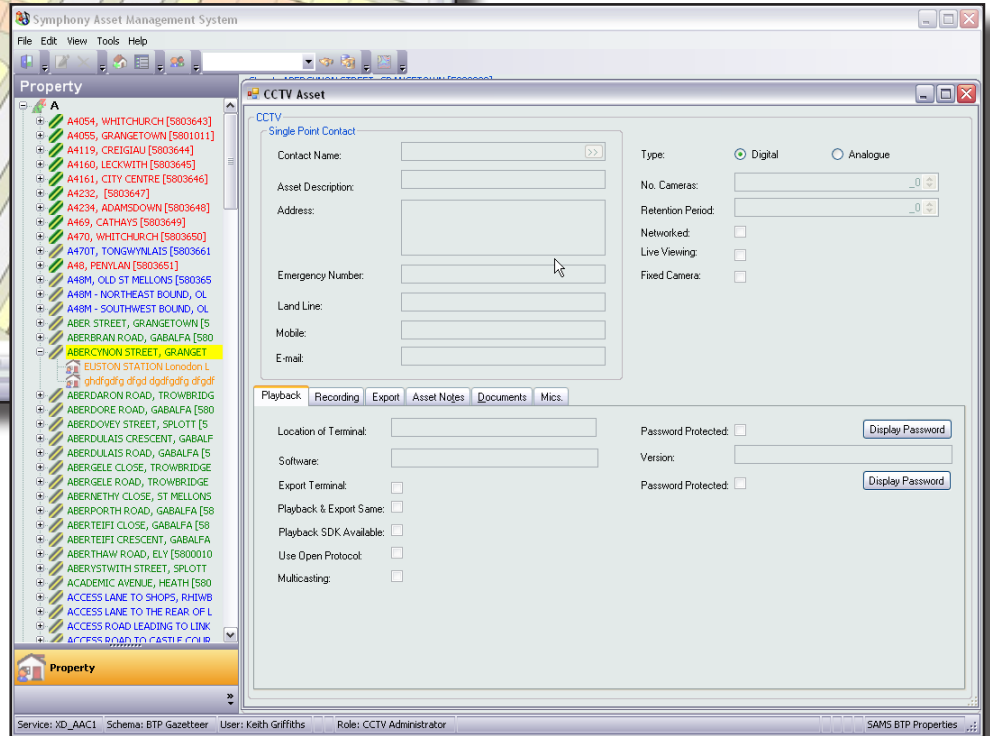
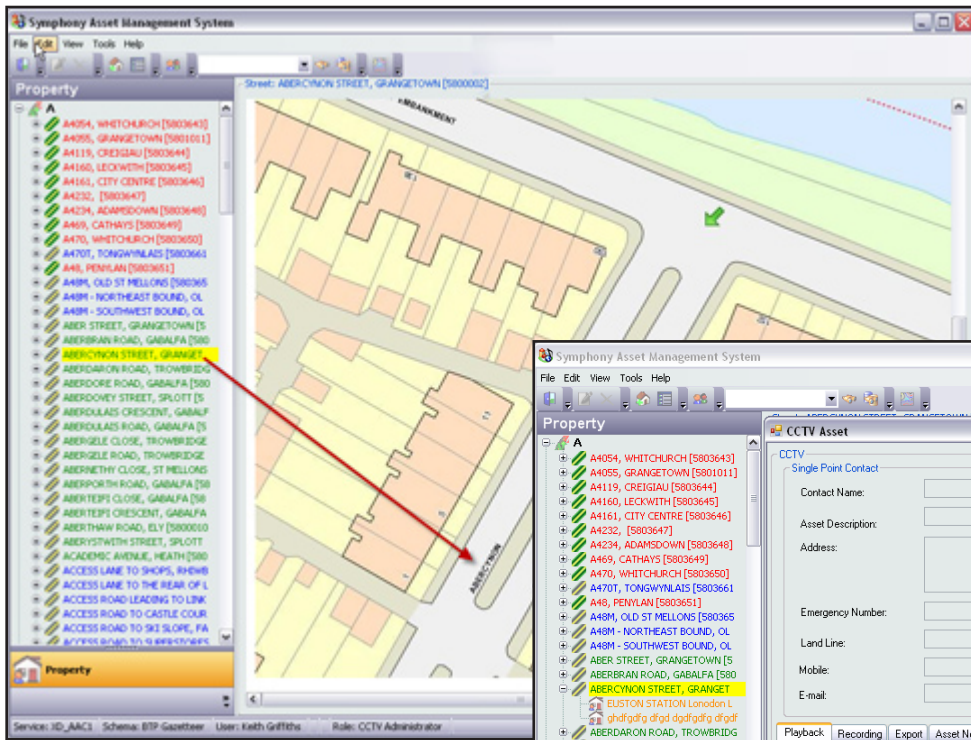
#### Instant Searching

SAMS CCTV comes equipped with the Aligned Assets search engine, SinglePoint, which offers a variety of searching options. A simple, one line search bar is available to locate addresses and through that the related CCTV assets, or an advanced search can be used to search on the CCTV data directly.

### The Benefits of SAMS CCTV

- Instant location of CCTV assets
- Search on address, street or CCTV asset data
- Compatible with 3rd party GIS
- Record information relating to each asset e.g. retention period
- Create local records for those localities not listed in the NLPG
- Hold and maintain both public and private CCTV assets
- BS7666 compliant
- All data accessible via expandable tree view
- Administrator and read-only rights
- Attach documents to each CCTV asset
- Future proofed against the National Address Gazetteer

*“Information about the CCTV can be introduced at any level within the property hierarchy and irrespective whether it is NLPG based or not. The system will give a visual representation of the status of any CCTV assets based on its retention period, enabling a user to make a rapid assessment if recovery of CCTV footage needs to be acted upon promptly.”*



## Location Management

Currently, if an incident occurs and CCTV footage would help in identifying the perpetrators, provide essential evidence or any number of other things, it is not known whether that footage exists until an officer visits that location and looks.

With SAMS CCTV, the locations of all CCTV cameras can be recorded, from those in public ownership, right down to those in the local corner shop. Whenever an incident occurs, a simple search will identify all CCTV in that vicinity, which can be made visible on your maps.

It then becomes a simple process of contacting the owner of that CCTV asset (which will be recorded in the system) and sending an officer to retrieve it.

## Asset Management

Knowing where CCTV is located is essential, but equally important is the information about that asset.

SAMS CCTV allows for a vast array of information to be recorded, all manageable by administrators or viewable by those with read-only rights. Information includes:

- Retention period
- Playback facilities
- Property type
- Owners' name and contact details
- CCTV type e.g. analogue or digital
- CCTV Manufacturer
- Recording quality
- Method of data request
- Associated control room
- Live viewing available
- Associated documents inc. pictures
- Free formed notes

## The National Address Gazetteer

SAMS CCTV is currently designed to source all of its address information directly from the NLPG.

What this means is that all of the address information will be standardised to BS7666, updated regularly and geocoded for use in GIS.

As the NLPG is phased out and the National Address Gazetteer phased in, SAMS CCTV will be enabled to source its data from the National Address Gazetteer, which will allow for its sharing across all the emergency services, and both local and central government.

Aligned Assets Limited  
Unit 5, River Court  
Albert Drive, Sheerwater  
Woking, Surrey GU21 5RP  
United Kingdom



Tel: +44 (0) 870 750 8 750  
Fax: +44 (0) 870 750 9 750  
Email: [sales@aligned-assets.co.uk](mailto:sales@aligned-assets.co.uk)  
Web: [www.aligned-assets.co.uk](http://www.aligned-assets.co.uk)