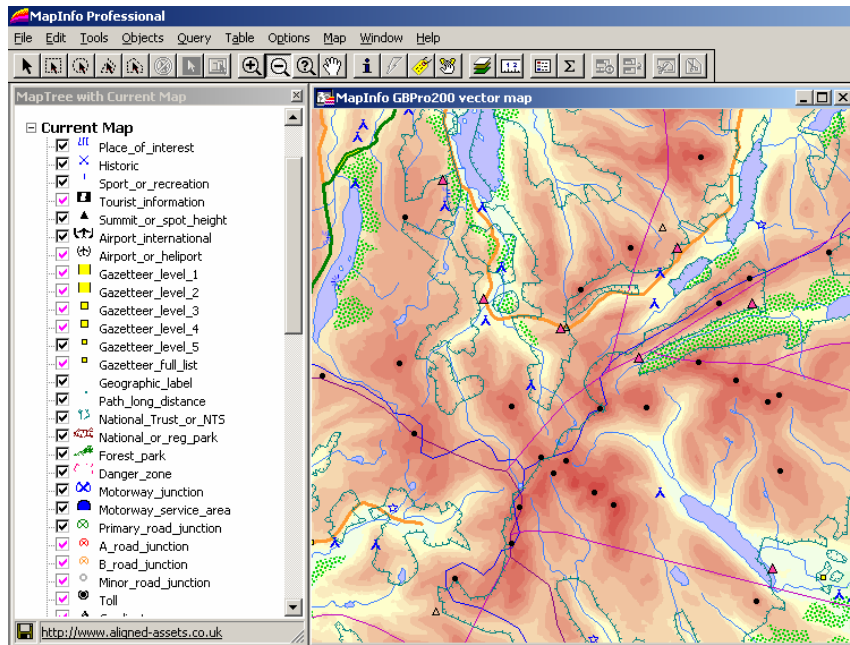


# MapTree

Organise your data so it's never more than one click away



Mapping Your Business Vision



MapTree features:

- ▲ *Tree View of layers*
- ▲ *Assign layers meaningful names*
- ▲ *Turn layers on or off with a single mouse click*
- ▲ *Workspace Preview*
- ▲ *Find Tool to search all layers*
- ▲ *Metadata Search*

With MapTree you can:

- ▲ See at a glance which layers are currently visible
- ▲ Add or remove layers with a single mouse click
- ▲ Find all your tables quickly and easily, by name or metadata tag
- ▲ Search the attributes of every open layer for an object and then zoom to that location on the map window
- ▲ View metadata and search metadata descriptions for every table
- ▲ Preview the content of workspaces before opening them by viewing a thumbnail image
- ▲ Set up User Profiles to customise tree views for groups or individuals

**TRY MAPTREE TODAY**

**DOWNLOAD OUR  
FREE EVALUATION  
VERSION**

<http://www.maptree.co.uk>

**Make organising your data less of a chore!**

[www.aligned-assets.co.uk](http://www.aligned-assets.co.uk)

**Microsoft**  
CERTIFIED  
Partner

**ORACLE** PARTNER

**Ordnance Survey**  
Licensed Partner

**SPATIAL  
TECHNOLOGY**

**Laser-Scan**

## MapTree

The simple way to work with and manage your data in MapInfo.

MapTree lets you see all your tables and workspaces listed in a hierarchical windows explorer style "tree" view.

This tree view enables you to easily open files, search tables for data, view metadata, and better manage your datasets.

### Tree View

In the tree, data is listed under organised **subject headings** or "branches" making them easy to find.

Map layers in the tree are assigned **descriptive names** so you can recognize their contents immediately.

### Fully Customisable

- ▲ Tables and workspaces can be grafted and trimmed from anywhere on the tree irrespective of the order in which layers are displayed in the map window.
- ▲ MapTree will even operate if files have been moved.
- ▲ Give meaningful names to your tables, without renaming.
- ▲ Organise data using logical groupings and branch names.
- ▲ Set up and save default zoom layering.

### Open Tables and Workspaces

One mouse click is all it takes to open and close tables in MapTree. There is no need to go into the layer control and no need to know the file name and path of your data.

The **workspace preview** provides a useful reminder of the files content by displaying a snapshot image.

### Managing Tables & Workspaces

Files are easy to work with using MapTree as you can always see what layers you have open.

MapTree ensures that users know what data is available and that the correct version of data is in use.

### Advanced Options

**Search:** search the attributes of every open layer for an object and then zoom to the location on the map window. Fields must be indexed.

**Metadata Search:** Search the metadata descriptions of any table.

**Status Bar:** provides a brief description of the currently highlighted MapTree file.

**Contact us for more information.  
See below for details.**