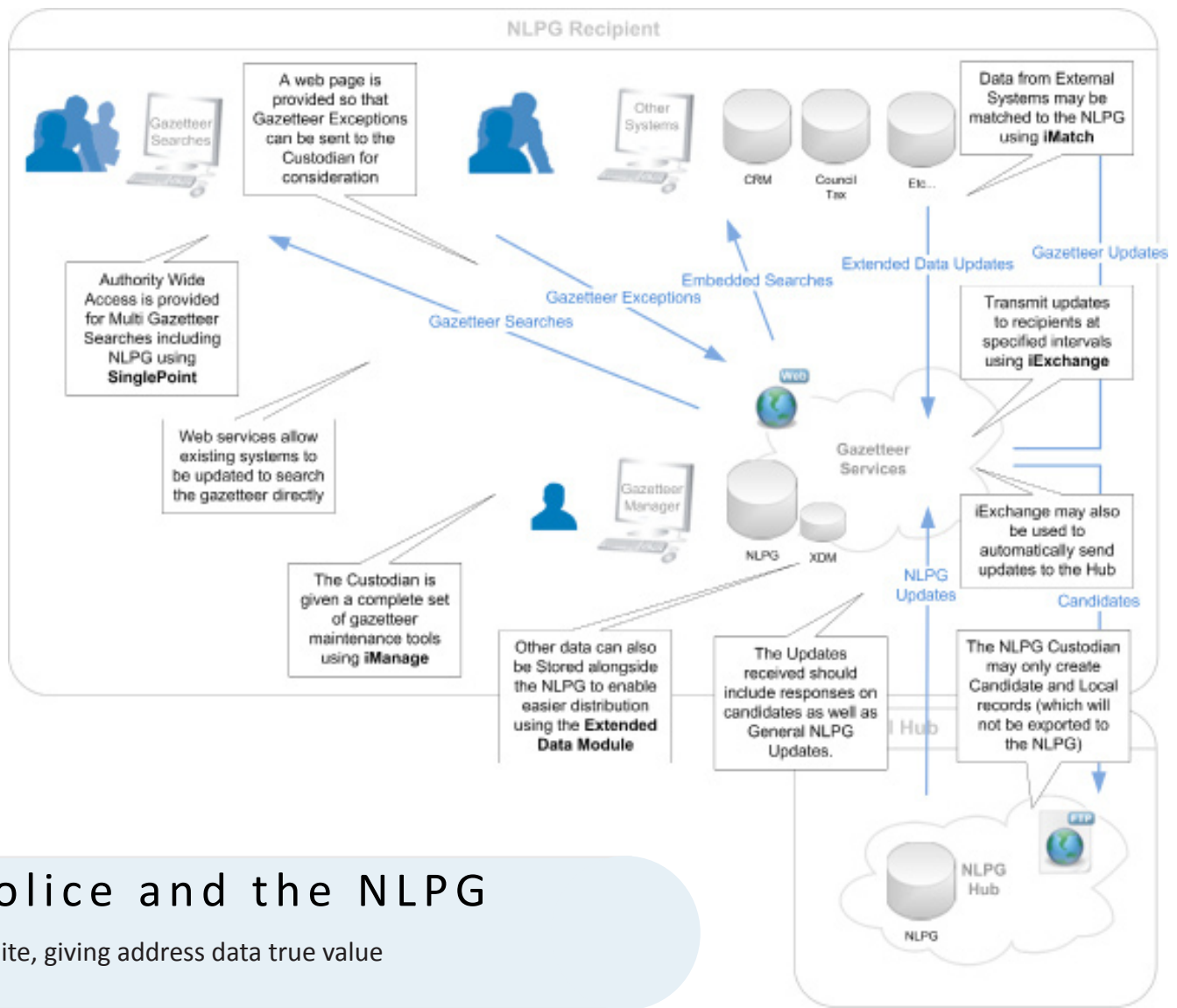




## Symphony Suite

Gazetteer solutions for the Police Force



## The Police and the NLPG

Symphony Suite, giving address data true value

The Mapping Services Agreement (MSA) entitles the Police Forces of England and Wales to take advantage of data from the National Land and Property Gazetteer (NLPG). This collection of over 32 million addressable and non-addressable records is the most accurate and up-to-date available and is accessible via the solutions provided by Aligned Assets.

The NLPG is an amalgamation of all the address data from 376 local authorities across England and Wales, taking five years and over £70 Million of investment to create.

Through BS7666 standardisation, each entry is identically formatted and tagged with a Unique Property Reference Number (UPRN) that removes all possibility of duplication.

The MSA facilitates the regular updating of NLPG data to the Police and once the original block of data has been acquired they can receive updates once a week, twice a week or even everyday.

This results in the address data being effectively live data in that changes in a local authority are automatically fed to the NLPG, which in turn is fed directly to the Police.

### Benefits of the Symphony Suite

- Access and use the most accurate and up-to-date address data available
- Integrate the NLPG data into back office and 3rd party systems
- Enable organisation-wide access to the NLPG
- Extend your gazetteer with Police specific information
- Create and export candidate records quickly and easily
- Search multiple gazetteers simultaneously
- Used by the BTP and FiReControl

*"Aligned Assets has a proven track record, but they've excelled themselves with the next-generation Symphony Suite. The fully integrated series of applications provides effective management of our land and property data, and we like the powerful feature of being able to export the information to any third-party system"*

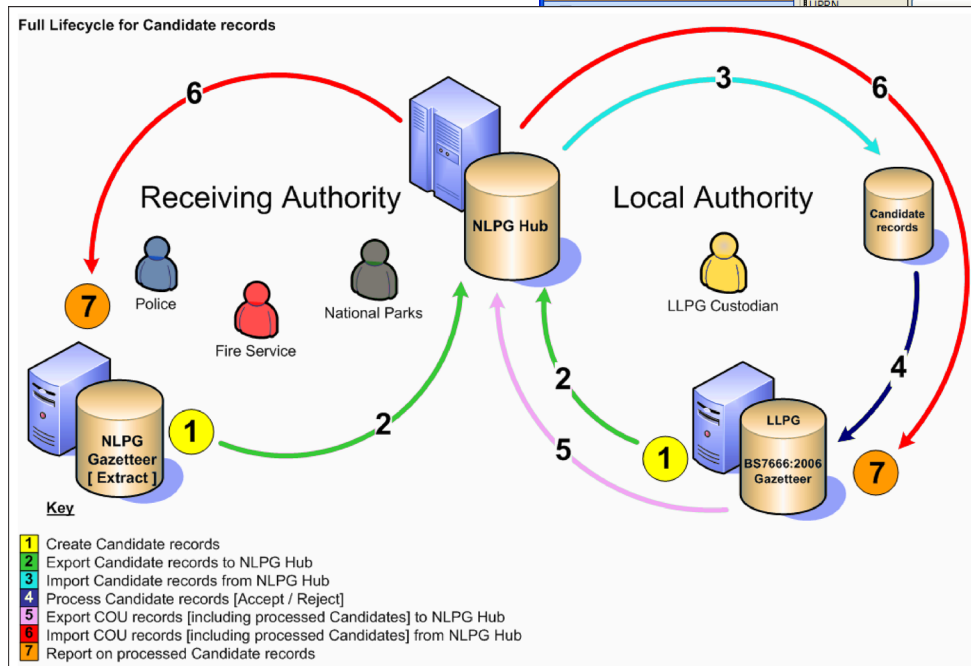
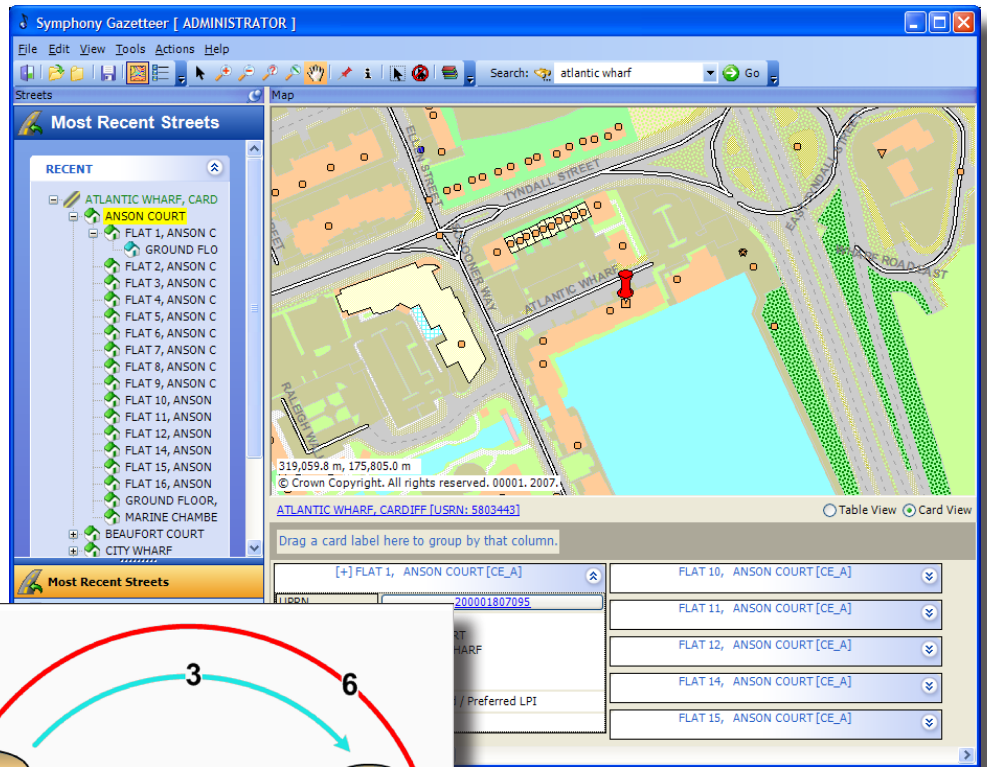
- John Jaggard, Gazetteer Manager, Swindon Borough Council

## Candidate Records

With the wider use of the NLPG, the creation and processing of candidate records has become ever more important.

Symphony iManage is fully equipped to deal with the creation and export of candidate records by the Police to the national hub.

This quick and easy process is another method by which the NLPG can be continually updated and for the Police to always have data that is accurate and up-to-date.



## The Symphony Suite

Aligned Assets' Symphony Suite is an enterprise-wide gazetteer solution that enables the user to have complete control over their NLPG data. It comprises a number of modules:

### iManage...

Is the core product within the Symphony Suite, providing you with the tools to easily create, maintain and analyse your BS7666 compliant Gazetteer

### iExchange...

Allows you to share NLPG data from your BS7666 Gazetteer with one or more external systems such as crime analysis or human resources

### iMatch...

Allows for the matching of other address databases against your BS7666 Gazetteer giving validation, BS7666 standardisation and geocoding

### SinglePoint Search...

Acts as a unique portal through which the NLPG and multiple gazetteers can be searched simultaneously in sub-second time

### Xtended Data Module...

Allows for additional, non-BS7666 information to be stored alongside existing address and location data within your BS7666 Gazetteer

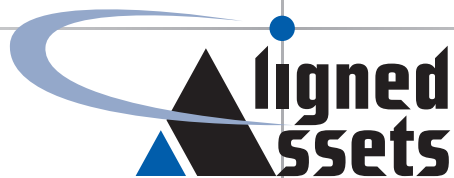
### iValidate...

Enables the validation of specific BS7666 criteria and is capable of performing a complete 'health check' of your gazetteer database.

## Features of the Symphony Suite

- Cutting edge solution to manage Street and Land & Property data
- Automatically update other systems with NLPG changes
- Provide vital authority-wide access to the NLPG via web services
- Match other address databases to your BS7666 Gazetteer
- Constantly improve your NLPG with gazetteer validation
- Simple to use plotting and batch plotting utility
- Search engine for sub-second searching of the NLPG and other gazetteers
- Attach non-BS7666 information to the UPRN

Aligned Assets Limited  
Unit 5, River Court  
Albert Drive, Sheerwater  
Woking, Surrey GU21 5RP  
United Kingdom



Tel: +44 (0) 870 750 8 750  
Fax: +44 (0) 870 750 9 750  
Email: [sales@aligned-assets.co.uk](mailto:sales@aligned-assets.co.uk)  
Web: [www.aligned-assets.co.uk](http://www.aligned-assets.co.uk)