

Xtended Data Module

Getting more from your BS7666 Gazetteer



Xtended Data Module

User defined fields to move your gazetteer beyond BS7666

The Xtended Data Module (XDM) extends your central address database into a full corporate asset by enabling the storage of any kind of additional information alongside the address information. Put simply, it makes all information instantly accessible to all systems and users.

It is designed to move your gazetteer beyond the confines of BS7666 and enable complete control over the choice of information stored.

What the XDM Does

The XDM creates user defined fields against each entry in your gazetteer into which additional information about that property can be entered.

An unlimited number of data categories can be added using the XDM Management Console. Within each Category, columns of all standard data types are supported (e.g. Integers, Floats, Text) as well as lookup columns and filtered lookup columns.

A variety of information which relates to property is often distributed across different systems with different user interfaces and databases, and it has been difficult to bring this information together and make it universally available, until now.

Using the XDM, relevant data from separate systems can be incorporated into a central system providing consistent user interfaces, making it easier to disseminate to a wide audience.

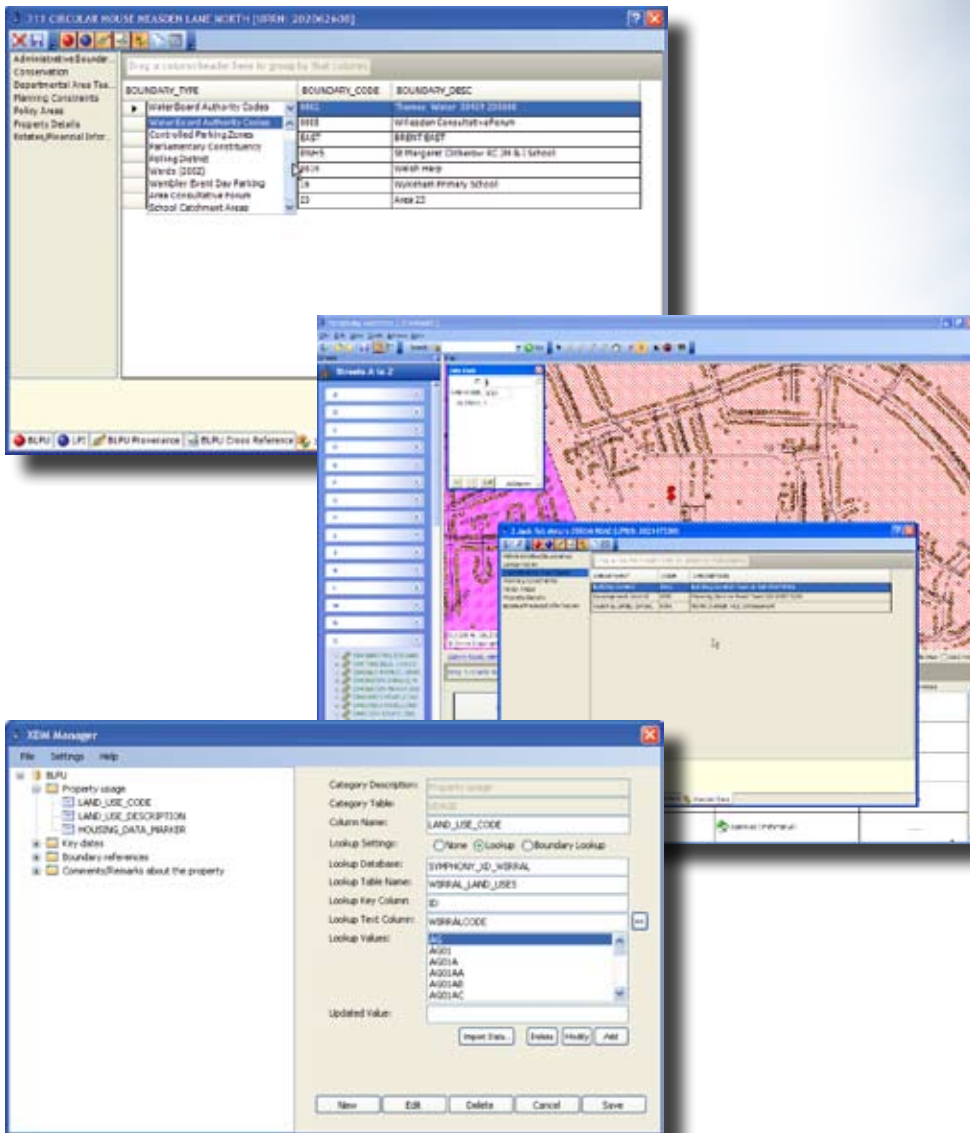
This results in considerable time saving and goes a long way to avoiding the issues involved when additional training, for additional systems is otherwise required. With only one system the efficiency gains are clear.

Typical data that can be included:

- Conservation Areas
- Sites of Special Scientific Interest
- Smoke and Pollution Control Zones
- Contaminated Land
- Administrative Boundaries
- Planning Applications
- Listed Buildings
- Key Holder Data
- School Catchment Areas
- Flood Risk Zones
- Council Tax Band
- Postal Addresses
- Parliamentary Constituency
- Controlled Parking Zones
- Voting wards, applicable polling stations and parish boundaries
- Road salting routes
- Refuse collection day
- Water Board Authority

"We have found that the Xtended Data Module allows custodians the opportunity to move beyond the confines of BS7666 and develop their gazetteer into a much more powerful tool."

- Phil Gee, Commercial Director, Aligned Assets



Data can be entered into the Schema tables:

- Manually, via the Xtended Data Tab and Grid in Symphony iManage.
- Imported automatically using the Xtended Data Module importer
- Generated from a set of Oracle GIS Layers by spatial reference to a Property. Every time the Property geometry changes, the data created by spatial relationship is automatically updated.
- Generated from a table in another Oracle schema

The XDM Solution

- The XDM allows for all property related data to be stored in the one system, not just linked to the property via a cross reference, but to actually sit there, in the database, alongside it.
- The XDM enables an organisation to have a central store of information i.e. it brings previously disparate sources of information into one, accessible place.
- The XDM makes it faster to access property related information.
- Data can be related either directly to each UPRN or Spatially i.e. for Boundary layers

The XDM for the emergency services

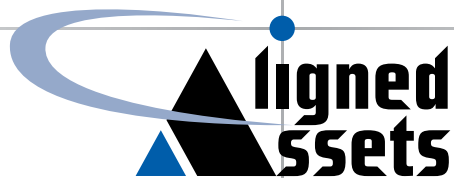
Although all emergency services have a fundamental requirement for accurate address data, additional requirements vary not only between the services, but between each individual organisation. This is why the XDM allows for an infinite amount of user defined fields to be attached to each record within your corporate gazetteer.

More than any other organisation, the XDM is essential for the emergency services as it can be used to store, manage and ultimately provide data to men and women on the ground.

Emergency Service Examples

- Thatched roofs
- Access codes for complexes
- Firearm licenses
- Closest water source e.g. pond or lake
- Alarm codes
- Anti-Social Behaviour Orders
- Closest police station/fire station/hospital
- Fire works factories
- Security devices
- Key holder information
- Proximity to/nearest CCTV
- Crime data
- Census data
- Police beats
- Postal addresses

Aligned Assets Limited
Unit 5, River Court
Albert Drive, Sheerwater
Woking, Surrey GU21 5RP
United Kingdom



Tel: +44 (0) 870 750 8 750
Fax: +44 (0) 870 750 9 750
Email: sales@aligned-assets.co.uk
Web: www.aligned-assets.co.uk