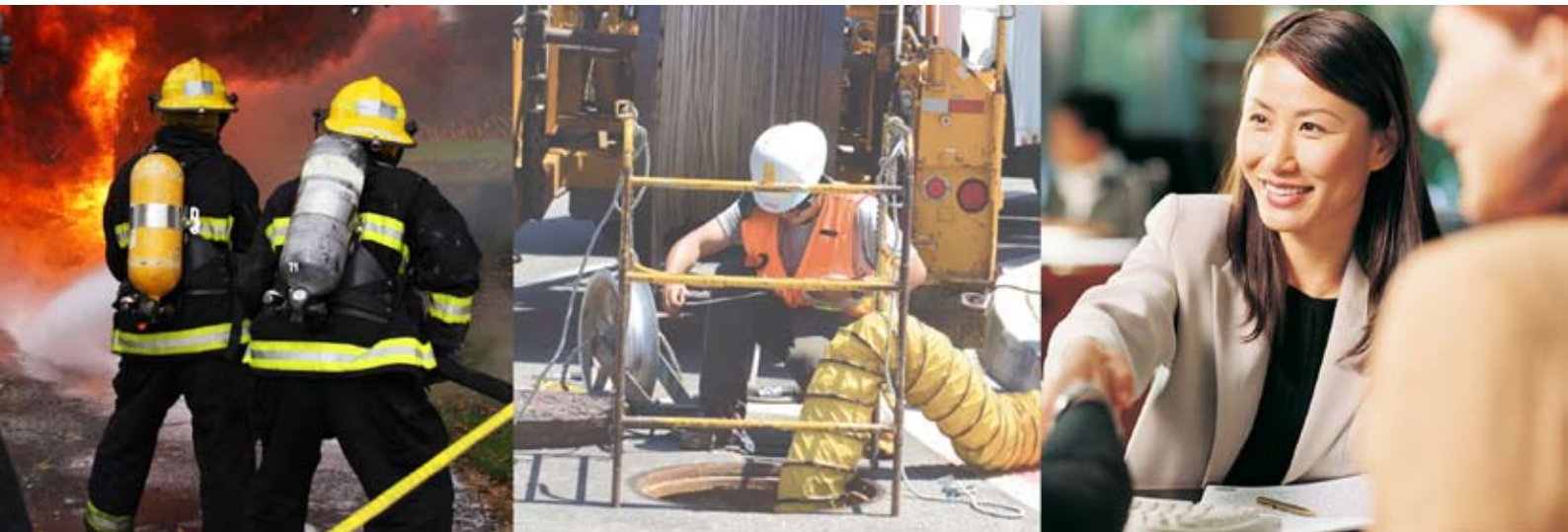


## Symphony iExchange

Automate the dissemination of your gazetteer data



## Symphony iExchange

Disseminate your address data throughout your organisation

Symphony iExchange is an intuitive piece of software that allows you to export your NLPG/NAG data to other systems in your organisation. It enables you to synchronise all your departmental address data, meaning that everyone will be accessing identical and consistently up to date information.

Because every department in every organisation will have very different requirements, Symphony iExchange is fully customisable to allow you to:

- Configure who receives updates
- Configure the frequency of updates
- Configure which elements of address data are to be sent
- Configure the method and format of the updates
- Keep an audit trail of all data sent

Every recipient can be individually configured and the whole process is designed so that you can simply 'set it and forget it'.

Symphony iExchange gives an organisation a fundamental benefit by being a central source of address data from which updates can be disseminated to all other systems and departments. This saves time and money, increases efficiency and reduces error.

If different departments base their operations upon different information then inaccuracies can occur and if a department isn't aware of an address change, for a local authority this might mean an inability to register people to vote, for a private company a potential customer could be lost or in the worst case scenario, for the emergency services people might actually die.

### Benefits

**Increases accuracy and reduces errors, saves time and saves money**

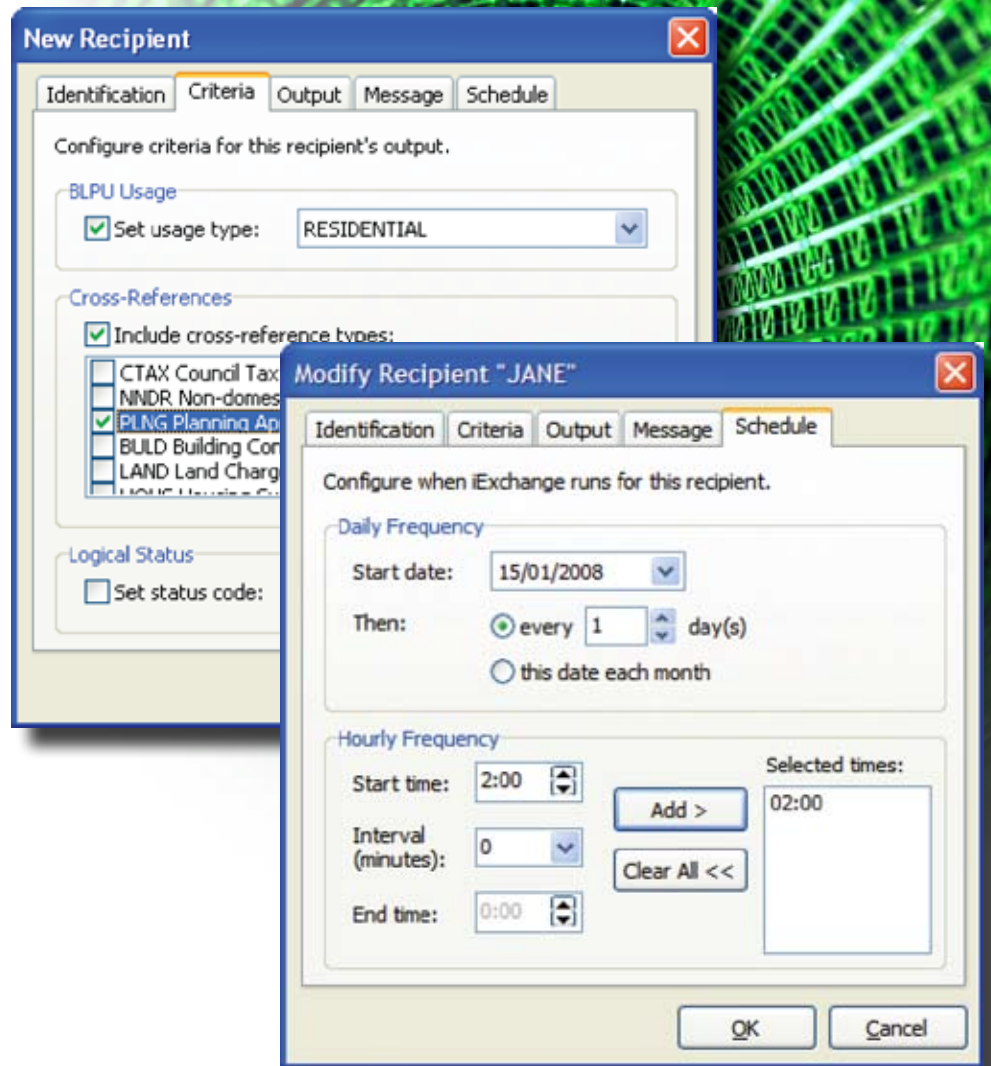
- Save time and money by no longer having to update disparate systems
- "Set and Forget" functionality
- Anytime scheduling of automatic updates
- Allow different departments to receive only the updates they need
- Seamless integration with your central address data
- Flexibility for data deployment
- The ability to configure multiple recipients
- XML and DTF 6.3 & 7.3 compliance
- Extended Help and documentation

*"iExchange provides us with additional benefits; automatically linking with the central NLPG Hub to provide ongoing updates and outputting information for the address layer within the council's corporate GIS. This means that anyone with access to computerised mapping within the council has an up to date address layer using the same address information as everybody else."*

- Kristin Woodland, Highway Information Manager, Swindon Borough Council

## Detailed Features

- Automatically sends notifications to recipients at the time of your choosing, based upon filter settings determined by the recipient on initial configuration
- A full audit trail of notifications sent can be found in the repository folder location. It is then easy to review results that have been previously sent to individual recipients.
- Server-side processing and business logic with minimal network and processor overhead
- Low maintenance, easy to install and configure. Initially installed and configured by fully qualified Symphony iExchange consultants
- XML and DTF compliancy. Data exchange between systems will utilise common data standards such as XML and DTF. These are national and international standards for data transfer
- A number of pre-defined XML Transformations which have been created for specific external systems
- Fully customisable output as new XML Transformations can be created by a consultant and simply dropped into the Transformations folder to create output as CSV, XML or simply plain text
- The Administrator is automatically empowered to control dataflow using the Symphony iExchange Manager to configure filter settings
- Fully featured Help and documentation to enable the user to rapidly become proficient and realise the full benefits of their NLPG/NAG data, including User Case Scenarios and Working Dataflow Diagrams



## Automatic Updates

Automation is essential in today's fast-paced world and anything that can minimise human interaction is a desirable commodity.

Fundamental to Symphony iExchange is that it not only ensures that all departments are using the most up date address data, but importantly that the process of updating is completely automated. Key to it is the simple 'set and forget' functionality, which means once you have set up who receives what, and when they receive it, you don't need to do anything more.

In addition to automatically updating your systems, it will also automatically generate and send out notifications to the recipients, as well as giving access to a full, complete audit trail of those notifications.

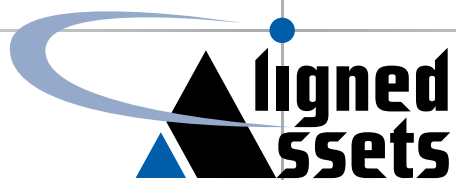
## Filter Settings

In most instances Symphony iExchange will be used to update your address data with the most recent changes (change-only-updates). However there are instances in which only certain types of address data will require export, or certain departments will require only subsets of the data.

To facilitate this, Symphony iExchange has various filter settings that enable full flexibility for data deployment by configuring the recipients to receive only the address data that they want.

Importantly, Symphony iExchange can be configured to export not only your NLPG/NAG data, but also all local records you have created, ensuring that whether nationally sourced or locally created, all systems will be using all your data.

Aligned Assets Limited  
Unit 5, River Court  
Albert Drive, Sheerwater  
Woking, Surrey GU21 5RP  
United Kingdom



Tel: +44 (0) 870 750 8 750  
Fax: +44 (0) 870 750 9 750  
Email: [sales@aligned-assets.co.uk](mailto:sales@aligned-assets.co.uk)  
Web: [www.aligned-assets.co.uk](http://www.aligned-assets.co.uk)