

iView

Simply add multiple documents to MapInfo

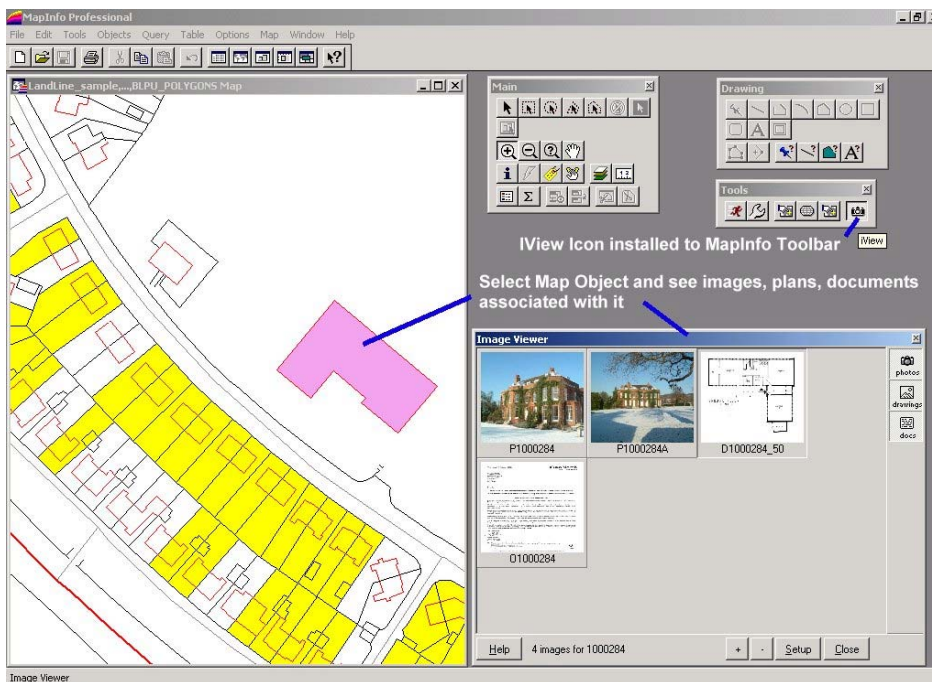


Mapping Your Business Vision

iView another class leading product from Aligned Assets.

iView a simple to use MapInfo tool that allows users to effortlessly associate multiple photographs, scaled drawings and other documents (letters etc.) to be associated with objects within a MapInfo table.

A typical use would be to link photographs of a building, its internal plans and letters relating to its maintenance etc. against the map of the building in its locality. The user selects the MapInfo object and displays the photographs etc that are associated with it. These images can then be selected and enlarged; if a floor-plan is stored then once selected it can be accessed by the standard MapInfo tools usually for zooming and taking measurements.



The Image Viewer allows you to link images to records within a MapInfo table and, at the same time, define the type of image (e.g. Photo, Drawing or Document). The MapInfo table and "Link Field" are defined in the iView setup options. You may choose to be selective in the types of thumbnail images that you wish to view in the Image Viewer screen by clicking on the "Photos", "Drawings" and "Docs" icons at the top right hand side of the Image Viewer screen. If an icon is highlighted then that type of image will be shown in the viewer. Multiple image types may be selected.

Once an image has been linked to a table entry the image will be copied into the image directory (defined in the setup options). If you wish to view a particular image in detail, then double click on it and the image will be shown in its own window.

Highlights:

- ▲ Automatically adds a column to your MapInfo table to contain the Image identity
- ▲ Links photographs, scaled drawings and other documents to objects within a MapInfo table
- ▲ Easy to use interface to allocate images to objects
- ▲ Select the type(s) of images that you wish to display
- ▲ All images stored in one directory
- ▲ Stored plans are scaleable and allow accurate measurements to be taken
- ▲ Stored plans can be accessed by the standard MapInfo tools for zooming and panning
- ▲ Seamlessly integrates with MapInfo Professional



iView features include:

- ▲ Automatically adds a column to your MapInfo table to contain the Image identity
- ▲ Includes an archive facility to hold images that are no longer needed
- ▲ When scalable plans are associated with a MapInfo object, iView allows the user to use the MapInfo tools to measure the plans as well as to pan and zoom across them
- ▲ It seamlessly integrates with standard MapInfo Professional; on install all the linkages and icons are automatically loaded to the desktop
- ▲ Fully featured Help and sample data to allow the user to rapidly become proficient and realise the benefits of the product

**Contact us for more information.
See below for details.**

iView Licencing

Fully functional 30 day
Evaluation Version free

1 - 4 User Licence (per user) £325

Please enquire about multi-user
licencing for significant reductions!

Maintenance - 20% of list price p.a.

*All prices exclude delivery and VAT, and are
subject to change without notice.*

Aligned Assets Limited
Links One
Links Business Centre
Old Woking Road
Old Woking, Surrey
GU22 8BF, United Kingdom



Tel: +44 (0) 870 750 8 750
Fax: +44 (0) 870 750 9 750
Email: sales@aligned-assets.co.uk
Web: www.aligned-assets.co.uk